

## WATERPROOF LITE WLBAR

STAINLESS STEEL LITE LED LIGHTING BAR

▶ LED LIGHTING SYSTEM   ▶ MACHINE VISION APPLICATIONS   ▶ FOOD INDUSTRY   ▶ STAINLESS STEEL BODY   ▶ IP67   ▶ AFFORDABLE LIGHTING

## AFFORDABLE & POWERFUL STAINLESS STEEL LIGHTING.



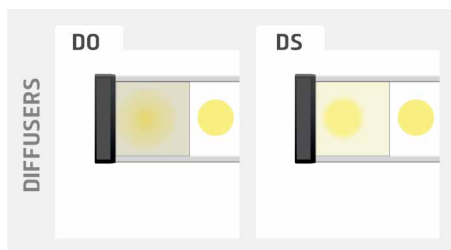
**WATERPROOF BODY**

304L STAINLESS STEEL

**SAFE USE**

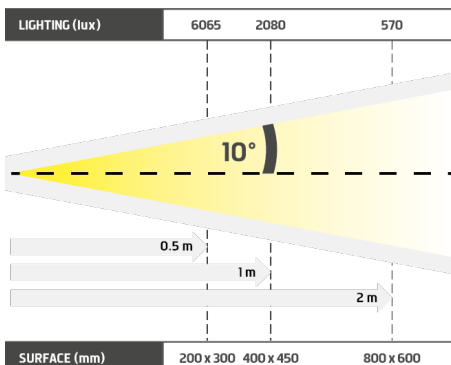
IN AGGRESSIVE ENVIRONMENT

- ✓ Affordable price,
- ✓ IP67 safeguard,
- ✓ Powerful lighting



Specially created to fulfill the food industry's requirements, the Waterproof Lite WLBAR is a direct led lighting, made of 304L stainless steel. Its solid body, pickled and passivated, can easily withstand the cleaning foams. Its mechanic has been designed for a safe use in aggressive environment (streaming, humidity...), with a IP 67 waterproof guarantee.

Actually, the Waterproof Lite WLBAR is a Lite LBAR, customized for the food industry. They both have the same power features and also a very competitive price.

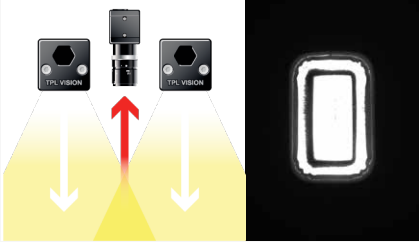


Distance	0.5m		1m		2m	
WLBAR4	6065 lux	200 x 300 mm	2080 lux	400 x 450 mm	570 lux	800 x 600 mm
WLBAR8	6795 lux	200 x 580 mm	3050 lux	400 x 730 mm	995 lux	800 x 880 mm

Minimum guaranteed values (white lighting measures)

▶ Demo for WLBAR4 (useful length : 308 mm)

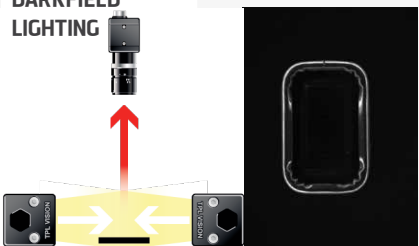
### DIRECT LIGHTING



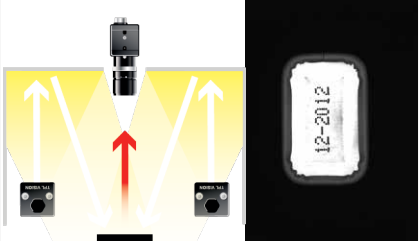
### DIRECT INCLINED LIGHTING



### DARKFIELD LIGHTING



### DOMELIGHTING



## RELATED PRODUCTS

Ask for your add-ons, customized for the Waterproof Lite WLBAR :

- wiring
- diffusers
- fixing hardware
- safety glasses

## MY CONTACT

.....

.....

.....

.....

.....

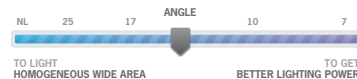
## TECHNICAL SPECIFICATIONS

	4	8
<b>Electronics</b>		
Power supply	24 VDC +/-10%	
Functioning mode	Continuous	
Wiring	M12 4 poles male connector	
Max. Consumption	11	22
<b>Optics</b>		
Colour	White, Red, Green, Blue, Infrared	
Number of Leds	4	8
Lens by default	± 10°	
<b>Mechanics</b>		
Total length (mm)	368	668
Width x thickness	68x36	
Useful length (mm)	308	608
Useful width (mm)	46	
Weight (g)	1000	1800
Body materials	Stainless steel 304L	
Diffuser	Transparent diffuser	
Fixing	4 M6 screws	
<b>Environment</b>		
Operating temperature	0 - 40°C	
Storage temperature	0 - 60°C	
IP protection	IP 67	
Labels	RoHS-CE-DEEE	

## HOW TO BUILD ONE'S REFERENCE

WLBAR	REQUIRED SETTINGS			OPTION
	NUMBER OF LEDS	COLOUR	OPTIC ANGLE OPTION	DIFFUSER OPTION
	4	WHI	10 ± 10°	TRANSPARENT
	8	630	9-16 ± 9°/16°	DO OPAQUE
		525	17 ± 17°	DS SATIN
		470	25 ± 25°	POL POLARIZER
		850	NL NO LENS	

**INFORMATION ABOUT LENSES**  
 NARROW ANGLE = GIVE PRIORITY TO LIGHTING POWER  
 WIDE ANGLE = GIVE PRIORITY TO HOMOGENEITY AND WIDE AREA



Features and presentations liable to modifications without prior notice. A-2 version, 2014/02 Edition

TPL VISION – 20 rue de Saint Philbert – 44118 LA CHEVROLIÈRE  
 Tél. + 33 2 40 56 10 99 – Fax. + 33 2 40 56 42 89  
[www.tpl-vision.net](http://www.tpl-vision.net)



Other available documents :

- PDF, DWG, DXF, IGS, STEP & X\_Y DRAWINGS
- USER'S GUIDE

