



TRING

AUTONOMOUS COMPACT RING - 9 LEDS

▷ RING LED LIGHTING ▷ COMPACT AND AUTONOMOUS LIGHT ▷ HIGH POWERFUL LED ▷ MACHINE VISION SYSTEMS ▷ CONFINED ENVIRONMENT

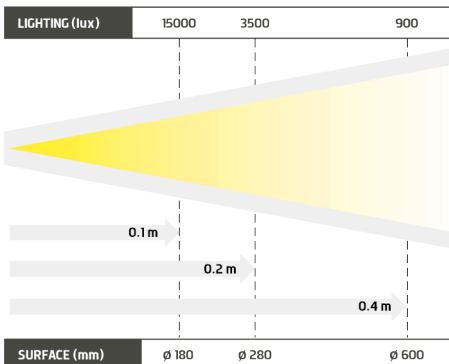
COMPACT & POWERFUL RING, FOR CONFINED ENVIRONMENTS



- ✓ 9 high powerful leds,
- ✓ current regulation on cable,
- ✓ continuous and strobe modes.

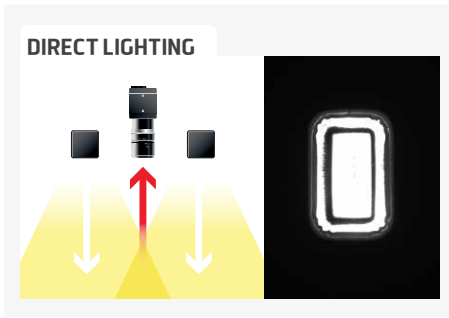


Equipped with 9 high powerful leds, the TRING is a miniature ring specially designed for the diffuse lighting of circular areas. It has a current control power supply that regulates the current intensity and consequently guarantees the lighting stability. Thanks to its M12 connector, it can be easily connected to any kind of production lines. Either in continuous or in strobe mode, the TRING perfectly goes along with a camera dedicated to quality control tasks: code reading, presence/absence checking, surface control...



Distance	0.1m		0.2m		0.4m	
TRING	15000 lux	∅ 180 mm	3500 lux	∅ 280 mm	900 lux	∅ 600mm

Minimum guaranteed values (white lighting measures)



TECHNICAL SPECIFICATIONS

Electronics	
Power supply	24 VDC +/-10%
Functioning mode	Continuous or strobe according to wiring
Maximum rising time	1.5 ms
Maximum falling time	1 ms
Wiring	M12 4 poles male connector
Max. consumption	6 W
Optics	
Colour	White, Red, Green, Blue, Infrared
Number of Leds	9
Lens by default	No lenses
Mechanics	
Dimensions	Ø Int : 38 mm - Ø Ext : 66 mm
Width	15 mm
Weight	70 g
Materials	Black anodized aluminum
Diffuser	Satin diffuser
Fixing	2 M3 screws
Environment	
Operating temperature	0 - 40°C
Storage temperature	0 - 60°C
IP protection	IP 40
Labels	RoHS-CE-DEEE

RELATED PRODUCTS

Ask for your add-ons, customized for the TRING:

- wiring
- diffusers
- fixing hardware
- safety glasses

MY CONTACT

.....

.....

.....

.....

.....

HOW TO BUILD YOUR REFERENCE

REQUIRED SETTINGS		OPTION
TRING	COLOUR	DIFFUSER OPTION
	WHI <input type="checkbox"/>	DS SATIN
	630 <input type="checkbox"/>	DO OPAQUE
	525 <input type="checkbox"/>	DT TRANSPARENT ¹
	470 <input type="checkbox"/>	POL POLARIZER ²
	850 <input type="checkbox"/>	

1 : NO DIFFUSION
2 : EXCEPT FOR INFRAROUGE 850

EXAMPLES :
 TRING RED LED SATIN DIFFUSER : → TRING-630-DS
 TRING WHITE LED OPAQUE DIFFUSER : → TRING-WHI-DO

Features and presentations liable to modifications without prior notice. C-2 version, 2017/07 Edition

TPL VISION UK

Brenchley House - School Road - Charing - Kent TN27 0JW - UK
 Tel. +44 (0)1738 450 504 - contact@tpl-vision.co.uk

www.tpl-vision.com



Other available documents :

- PDF, DWG, DXF, IGS, STEP & X_Y DRAWINGS
- USER'S GUIDE

