



TINY'Z AD

COMPACT AND POWERFUL RING - 12 LEDS

▷ RING LED LIGHTING ▷ MACHINE VISION SYSTEM ▷ HIGH POWERFUL LED ▷ COMPACT LIGHTING ▷ QUALITY CONTROL WITH CAMERA

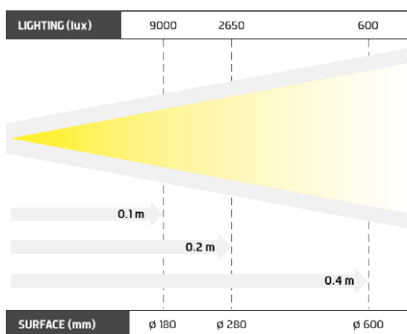
SO TINY AND SO POWERFUL.



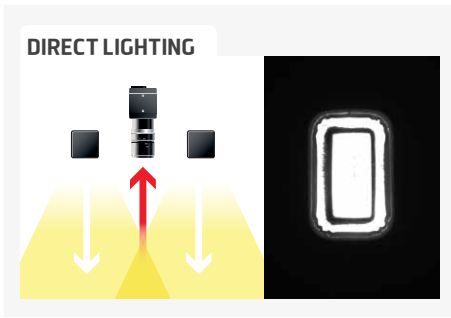
- ✓ 12 high powerful leds,
- ✓ compact shape,
- ✓ continuous and strobe modes.



The Tiny'Z AD is a miniature ring equipped with 12 high powerful leds. It has been specially created for the diffuse lighting of circular areas. Working in continuous or strobe mode, the Tiny'Z AD is the ideal partner of your camera, whatever the tasks it has to deal with : The Tiny'Z AD is particularly dedicated to the surface defect checking, marking reading and presence/absence control.



| Distance | 0.1m | | 0.2m | | 0.4m | |
|---|----------|----------|----------|----------|----------|---------|
| | Tinyz AD | 9000 lux | ∅ 180 mm | 2650 lux | ∅ 280 mm | 600 lux |
| Minimum guaranteed values (white lighting measures) | | | | | | |



TECHNICAL SPECIFICATIONS

| Electronics | |
|-----------------------|---|
| Power supply | 350mA Use a supply with current control |
| Wiring | M5 4 points male connector |
| Max. Consumption | 8 Watts |
| Optics | |
| Colour | White, Red, Green, Blue |
| Number of Leds | 12 |
| Mechanics | |
| Dimensions | Ø Int : 38 mm - Ø Ext : 66 mm |
| Width | 15 mm |
| Weight (g) | 70 g |
| Materials | Black anodized aluminum |
| Diffuser | Satin diffuser |
| Fixing | 2 M3 screws |
| Environment | |
| Operating temperature | 0 - 40°C |
| Storage temperature | 0 - 60°C |
| IP protection | IP 40 |
| Labels | RoHS-CE-DEEE |

RELATED PRODUCTS

Ask for your add-ons, customized for the Tiny'z AD:

- wiring
- fixing hardware
- power supply
- diffusers
- safety glasses

MY CONTACT

.....

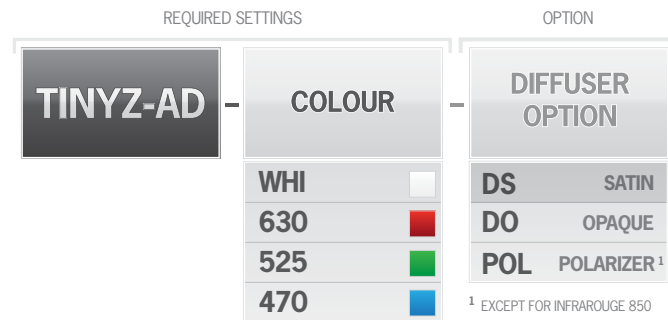
.....

.....

.....

.....

HOW TO BUILD YOUR REFERENCE



EXAMPLES :

TINY'Z AD WHITE LED SATIN DIFFUSER
 TINY'Z AD RED LED OPAQUE DIFFUSER
 TINY'Z AD BLUE LED POLARIZER

RESULTS :

→ TINYZ-AD-WHI-DS
 → TINYZ-AD-630-DO
 → TINYZ-AD-470-POL

Features and presentations liable to modifications without prior notice. D-1 version, 2017/07 Edition

TPL VISION UK

Brenchley House - School Road - Charing - Kent TN27 0JW - UK
 Tel. +44 (0)1738 450 504 - contact@tpl-vision.co.uk

www.tpl-vision.com



Other available documents :

- PDF, DWG, DXF, IGS, STEP & X_Y DRAWINGS
- USER'S GUIDE

