



## THINLED 4

COMPACT & HIGH POWERFUL LIGHTING

▷ HIGH POWERFUL SPOT LIGHTING ▷ COMPACT LED LIGHTING ▷ LED ILLUMINATION ▷ CONFINED SPACES ▷ MACHINE VISION SYSTEM

FOR A **POWERFUL** LIGHTING ADJUSTED  
TO **CONFINED SPACES.**

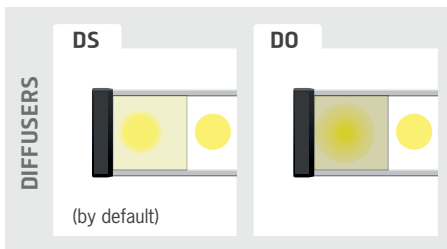


- ✓ Compact spot,
- ✓ 4 high powerful Leds,
- ✓ made for confined spaces.

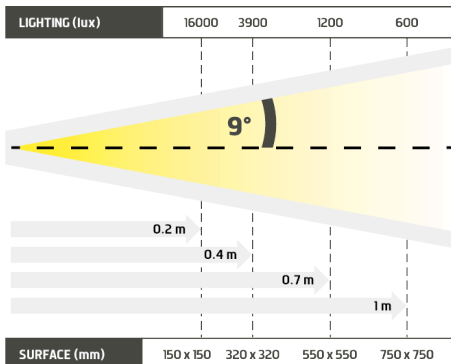
SOLID BODY

BLACK ANODIZED  
ALUMINUM

4 LEDS



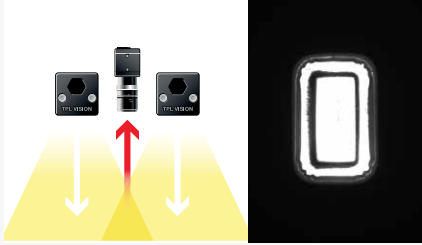
The ThinLED 4 is a such a powerful lighting compact spot that it can be seriously considered as a competitive alternative to lighting fibre optic. It has been specially developed for the control in confined spaces. Its highly powerful 4 leds, in directive intense or diffuse lighting, fit the highest production rates. The ThinLED 4 is equipped with a fixing stirrup, that makes it easy to fix and orientate, either for a direct or a darkfield lighting. The ThinLED 4 can work in continuous or strobe mode.



Distance	0.2m		0.4m		0.7m		1m	
ThinLED4-WHI	16000 lux	150 x 150 mm	3900 lux	320 x 320 mm	1200 lux	550 x 550 mm	600 lux	750 x 750 mm

Minimum guaranteed values (white lighting measures)

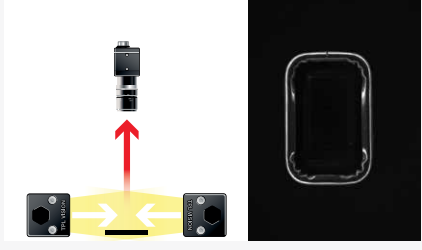
## DIRECT LIGHTING



## DIRECT INCLINED



## DARKFIELD



## TECHNICAL SPECIFICATIONS

Electronics	
Maximum power	350mA Use a current control power supply
Wiring	M8 3 poles female connector
Max. Consumption	6W
Optics	
Colour	White, Red, Green, Blue, Infrared
Number of Leds	4
Lens	± 9°
Mechanics	
Dimensions	38 x 30 x 28 mm
Weight	120 g
Materials	Black anodized aluminum
Diffuser	Satin diffuser
Fixing	2 holes for screw CHC M3 (not supplied)
Included add-ons	Fixing stirrup
Environment	
Operating temperature	0 - 40°C
Storage temperature	0 - 60°C
IP protection	IP 66
Labels	RoHS-CE-DEEE

## RELATED PRODUCTS

Ask for your add-ons, customized for the ThinLED 4 :

- wiring
- diffusers
- fixing hardware
- safety glasses

## MY CONTACT

.....

.....

.....

.....

.....

## HOW TO BUILD YOUR REFERENCE

REQUIRED SETTINGS		OPTION	
<b>THINLED4</b>	<b>COLOUR</b>	<b>OPTIC ANGLE</b>	<b>DIFFUSER OPTION</b>
	WHI	9 ± 9°	SATIN
	630	NL NO LENS	DO OPAQUE
	525		POL POLARIZER *
	470		
850			

\* EXCEPT FOR INFRARED 850

### EXAMPLES :

THINLED 4 WHITE LEDS ± 9° SATIN DIFFUSER : THINLED4-WHI-9  
 THINLED 4 RED LEDS ± 9° OPAQUE DIFFUSER : THINLED4-630-9-DO  
 THINLED 4 BLUE LEDS NO LENS SATIN DIFFUSER : THINLED4-470-NL

### RESULTS :

THINLED4-WHI-9  
 THINLED4-630-9-DO  
 THINLED4-470-NL

Features and presentations liable to modifications without prior notice. B-1 version, 2017/07 Edition

### TPL VISION UK

Brenchley House - School Road - Charing - Kent TN27 0JW - UK  
 Tel. +44 (0)1738 450 504 - contact@tpl-vision.co.uk

www.tpl-vision.com



### Other available documents :

- PDF, DWG, DXF, IGS, STEP & X\_Y DRAWINGS
- USER'S GUIDE

### ThinLED 4

