



THINLED 1

COMPACT & POWERFUL LIGHTING

▶ LED LIGHTING SYSTEM ▶ HIGH POWERFUL SPOT LIGHTING ▶ COMPACT LIGHT ▶ CONFINED ENVIRONMENT ▶ QUALITY CONTROL WITH CAMERA

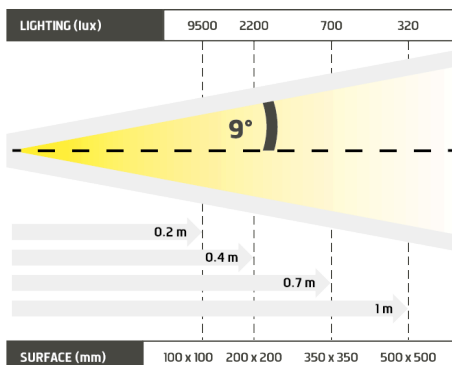
ALL THE LED LIGHTING POWER ADJUSTED TO CONFINED ENVIRONMENTS.



- ✓ Powerful and compact,
- ✓ easy to use,
- ✓ made for confined spaces.

The ThinLED 1 is a miniature spot that provides an incredible lighting, considering its size. Its global shape enables an easy set up. The ThinLED 1 is particularly recommended for controls in small spaces. It can be seriously considered as a competitive alternative

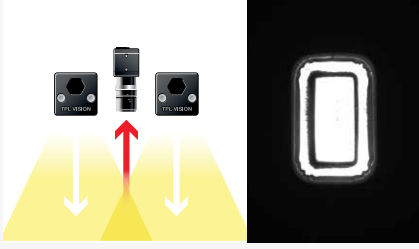
to lighting fibre optic : its high powerful led fits the highest production rates. The ThinLED 1 is obviously the key lighting for industrial vision in confined spaces.



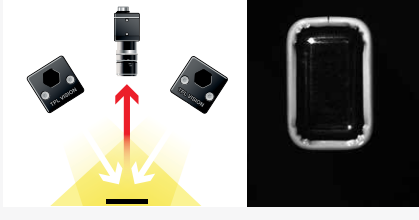
Distance	0.2m		0.4m		0.7m		1m	
ThinLED1-WH1	9500 lux	100 x 100 mm	2200 lux	200 x 200 mm	700 lux	350 x 350 mm	320 lux	500 x 500 mm

Minimum guaranteed values (white lighting measures)

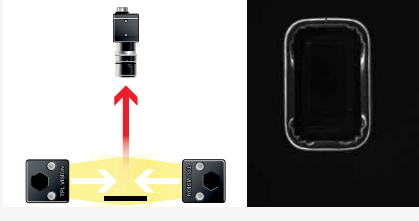
DIRECT LIGHTING



DIRECT INCLINED LIGHTING



DARKFIELD LIGHTING



TECHNICAL SPECIFICATIONS

Electronics	
Maximum power	350mA Use a current control power supply
Wiring	M8 3 poles female connector
Max. Consumption	1.5W
Optics	
Colour	White, Red, Green, Blue
Number of Leds	1
Lens	± 9°
Mechanics	
Dimensions	23 x 20 x 13 mm
Weight	27.4 g
Materials	Black anodized aluminum
Fixing	2 holes for screw CHC M3 (not supplied)
Environment	
Operating temperature	0 - 40°C
Storage temperature	0 - 60°C
IP protection	IP 40
Labels	RoHS-CE-DEEE

RELATED PRODUCTS

Ask for your add-ons, customized for the ThinLED 1 :

- wiring
- safety glasses
- fixing hardware

MY CONTACT

.....

.....

.....

.....

.....

HOW TO BUILD YOUR REFERENCE

REQUIRED SETTINGS

THINLED1	COLOUR	OPTIC ANGLE
	WHI	9 ± 9°
	630	
	525	
	470	

EXAMPLES :

THINLED1 WHITE LED ± 9° :
 THINLED1 RED LED ± 9° :
 THINLED1 BLUE LED ± 9° :

RESULTS :

THINLED1-WHI-9
 THINLED1-630-9
 THINLED1-470-9

Features and presentations liable to modifications without prior notice. A-1 version, 2017/07 Edition

TPL VISION UK

Brenchley House - School Road - Charing - Kent TN27 0JW - UK
 Tel. +44 (0)1738 450 504 - contact@tpl-vision.co.uk

www.tpl-vision.com



Other available documents :

- PDF, DWG, DXF, IGS, STEP & X_Y DRAWINGS
- USER'S GUIDE

