

## A VERY POWERFUL SPOT IN A BAR SHAPE.



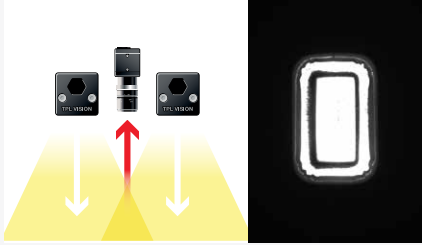
Either upward or downward, the Spot SBAR UV 405 can be fixed very easily, just like a bar, thanks to the groove located in the back of the body. In continuous or strobe modes, the Spot SBAR UV 405 is perfectly adapted to the control of circular areas, in confined environments.

Equipped with a Spot SBAR UV 405, your camera will then be able to lead an infallible quality control, detecting straight away the optical brighteners of the glues or paints that you would have used. The materials lacks and the assembly defects will be immediately highlighted.

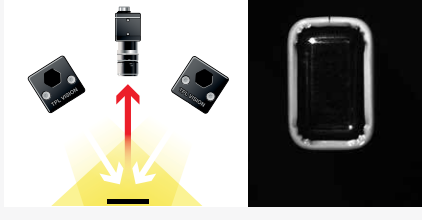
### UV-INFO

In the light spectrum, UV (ultra violet) rays are electromagnetic radiations situated between 280 and 400 nm (visible radiations: between 400 and 800 nm). What makes UV very interesting is the fact that, even if it is invisible for the naked eye, it can be observed by fluorescence: when some bodies are submitted to UV wavelengths, they emit a visible light. This is the principle of black light and of counterfeit notes detection. TPL Vision only uses UV belonging to the UV-A range.

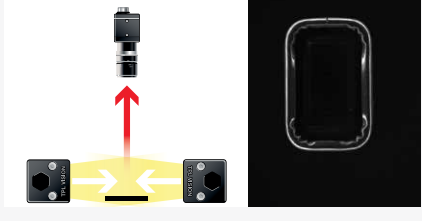
## DIRECT LIGHTING



## DIRECT INCLINED LIGHTING



## DARKFIELD LIGHTING



## TECHNICAL SPECIFICATIONS

Electronics	
Power supply	24V +/-10%
Functioning mode	Continuous or strobe according to wiring
Maximum rising time	1.5 ms
Maximum falling time	1 ms
Wiring	M12 4 poles male connector
Max. Consumption	2 W
Optics	
Colour	UV 405
Standard lens	$\pm 10^\circ$
Mechanics	
Dimensions	47 x 47 x 75 mm
Useful surface	45 x 35 mm
Weight	200 g
Materials	Colourless anodized aluminum
Diffuser	Satin diffuser
Fixing	2 M8 nuts to insert in the back groove
Included add-ons	2 M8 nuts
Environment	
Operating temperature	0 - 40°C
Storage temperature	0 - 60°C
IP protection	IP 40
Labels	RoHS-CE-DEEE

## RELATED PRODUCTS

Ask for your add-ons, customized for the Spot SBAR UV 405 :

- wiring
- safety glasses
- fixing hardware

## IP65 OPTION AVAILABLE

Please contact us to know more about it.

## MY CONTACT

.....

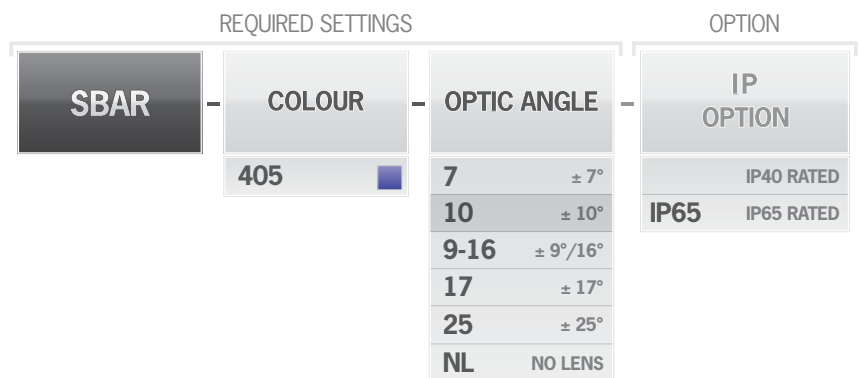
.....

.....

.....

.....

## HOW TO BUILD YOUR REFERENCE

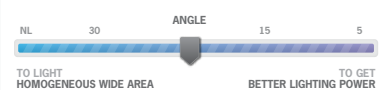


### EXAMPLES

- SBAR LED UV 405  $\pm 10^\circ$  IP40 RATED:     $\Rightarrow$  SBAR-405-10  
 SBAR LED UV 405  $\pm 25^\circ$  IP65 RATED:     $\Rightarrow$  SBAR-405-25-IP65  
 SBAR LED UV 405  $\pm 9^\circ/16^\circ$  IP40 RATED:  $\Rightarrow$  SBAR-405-9-16

### RESULTS

**INFORMATION ABOUT LENSES**  
**NARROW ANGLE** = GIVE PRIORITY TO LIGHTING POWER  
**WIDE ANGLE** = GIVE PRIORITY TO HOMOGENEITY AND WIDE AREA



Features and presentations liable to modifications without prior notice. B-1 version, 2017/07 Edition

### TPL VISION UK

Brenchley House - School Road - Charing - Kent TN27 0JW - UK  
 Tel. +44 (0)1738 450 504 - contact@tpl-vision.co.uk

www.tpl-vision.com



### Other available documents :

- PDF, DWG, DXF, IGS, STEP & X\_Y DRAWINGS
- USER'S GUIDE

### Spot SBAR UV 405

