



## SPOT SBAR

EASY TO USE POWERFUL LIGHTING SPOT

▷ MACHINE VISION SYSTEM ▷ HIGH POWERFUL LED LIGHTING ▷ SPOT LIGHT ▷ DIRECT ILLUMINATION ▷ QUALITY CONTROL WITH CAMERA

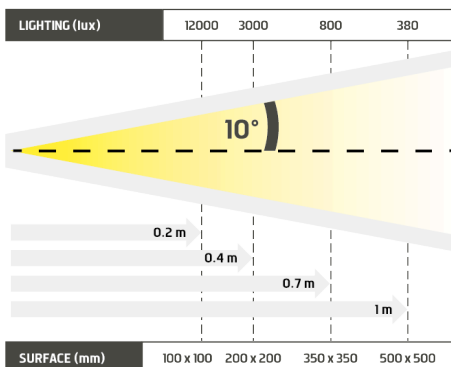
## A VERY POWERFUL SPOT IN A BAR SHAPE.



- ✓ Powerful lighting,
- ✓ continuous or strobe mode,
- ✓ easy to use.



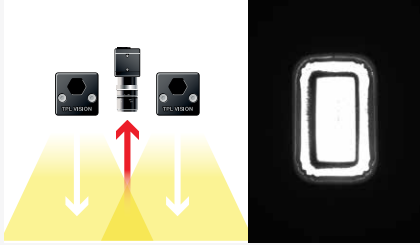
Equipped with a powerful led, the Spot SBAR is the ideal compromise between the spot and the bar : the Spot SBAR provides a very powerful lighting, just like a spot, and can be easily fixed, thanks to the groove behind, like a bar. Set up either upwards or downwards, it enables the powerful lighting of confined spaces. Thanks to its directive intense or diffuse lighting, the Spot SBAR reveals its whole potential for the control of a circular surface. Finally, the inside electronics make it very easy to use : you just have to plug the Spot SBAR on a 24V power supply.



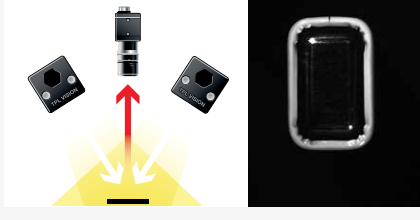
Distance	0.2m		0.4m		0.7m		1m	
SBAR1-WHI	12000 lux	100 x 100 mm	3000 lux	200 x 200 mm	800 lux	350 x 350 mm	380 lux	500 x 500 mm

Minimum guaranteed values (white lighting measures)

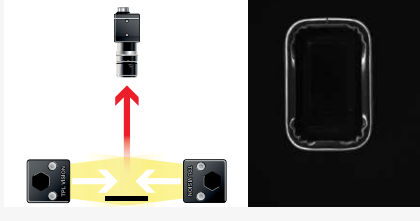
## DIRECT LIGHTING



## DIRECT INCLINED LIGHTING



## DARKFIELD LIGHTING



## TECHNICAL SPECIFICATIONS

Electronics	
Power supply	24V +/-10%
Functioning mode	Continuous or strobe according to wiring
Maximum rising time	1.5ms
Maximum falling time	1ms
Wiring	M12 4 poles male connector
Max. Consumption	2W
Optics	
Colour	White, Red, Green, Blue, Infrared (UV 405 available)
Standard lens	± 10°
Mechanics	
Dimensions	47 x 47 x 75 mm
Useful surface	45 x 35 mm
Weight (g)	200g
Materials	Colourless anodized aluminum
Diffuser	Transparent diffuser
Fixing	2 M8 nuts to insert in the back groove
Included add-ons	2 M8 nuts
Environment	
Operating temperature	0 - 40°C
Storage temperature	0 - 60°C
IP protection	IP 40
Labels	RoHS-CE-DEEE

## RELATED PRODUCTS

Ask for your add-ons, customized for the Spot SBAR :

- wiring
- diffusers
- fixing hardware
- safety glasses

## MY CONTACT

.....

.....

.....

.....

.....

## HOW TO BUILD YOUR REFERENCE

SBAR	REQUIRED SETTINGS		OPTION	
	COLOUR	OPTIC ANGLE	DIFFUSER OPTION	IP OPTION
	WHI <input type="checkbox"/>	7 ± 7°	TRANSPARENT	IP40 RATED
	630 <input type="checkbox"/>	10 ± 10°	DO OPAQUE	IP65 IP65 RATED
	525 <input type="checkbox"/>	9-16 ± 9°/16°	DS SATIN	
	470 <input type="checkbox"/>	17 ± 17°	POL POLARIZER*	
	850 <input type="checkbox"/>	25 ± 25°		
	NL	NO LENS		

\* DO NOT CONCERN THE SBAR 850

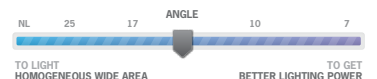
### EXAMPLES :

SBAR WHITE LED ± 10° OPAQUE DIFFUSER IP40 RATED:  
 SBAR RED LED ± 25° TRANSPARENT DIFFUSER IP65 RATED:  
 SBAR BLUE LED ± 9°/16° POLARIZER IP40 RATED:

### RESULTS :

⇒ SBAR-WHI-10-DO  
 ⇒ SBAR-630-25-IP65  
 ⇒ SBAR-470-9-16-POL

**INFORMATION ABOUT LENSES**  
 NARROW ANGLE = GIVE PRIORITY TO LIGHTING POWER  
 WIDE ANGLE = GIVE PRIORITY TO HOMOGENEITY AND WIDE AREA



Features and presentations liable to modifications without prior notice. B-1 version, 2017/07 Edition

### TPL VISION UK

Brenchley House - School Road - Charing - Kent TN27 0JW - UK  
 Tel. +44 (0)1738 450 504 - contact@tpl-vision.co.uk

www.tpl-vision.com



### Other available documents :

- PDF, DWG, DXF, IGS, STEP & X\_Y DRAWINGS
- USER'S GUIDE

### Spot SBAR

