

▶ LED LIGHTING SYSTEM ▶ VISION APPLICATIONS ▶ QUALITY CONTROL WITH CAMERA ▶ HIGH POWERFUL LED ▶ AFFORDABLE LIGHTING

AFFORDABLE & POWERFUL LIGHTING.

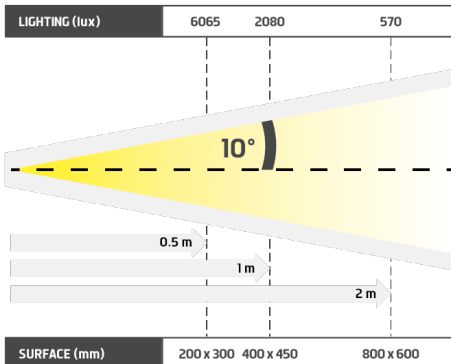


- ✓ Easy to use,
- ✓ Affordable price,
- ✓ from 30 cm to 1 m 10.



The Lite LBAR is a direct lighting bar, with a reduced number of Leds. However, there is no lack of power since it can enlighten wide spaces. You can easily fix it, thanks to the groove located on the back, either upwards or downwards. Besides the easy set up, the Lite LBAR is fully compatible with the industrial standards.

The competitive price is obviously a real asset : its quality, the same as any other TPL Vision's product, and its satisfactory lighting power make it an affordable long-lasting linear lighting.

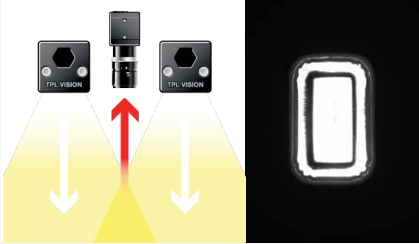


Distance	0.5m		1m		2m	
LBAR4	6065 lux	200 x 300 mm	2080 lux	400 x 450 mm	570 lux	800 x 600 mm
LBAR8	6795 lux	200 x 580 mm	3050 lux	400 x 730 mm	995 lux	800 x 880 mm
LBAR12	6890 lux	200 x 860 mm	3305 lux	400 x 1010 mm	1275 lux	800 x 1160 mm
LBAR16	6930 lux	200 x 1160 mm	3380 lux	400 x 1310 mm	1450 lux	800 x 1460 mm
LBAR20	6965 lux	200 x 1440 mm	3410 lux	400 x 1590 mm	1540 lux	800 x 1740 mm

Minimum guaranteed values (white lighting measures)

▶ Demo for LBAR4 (useful length : 284 mm)

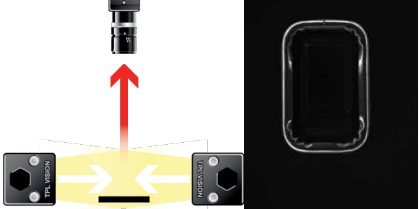
DIRECT LIGHTING



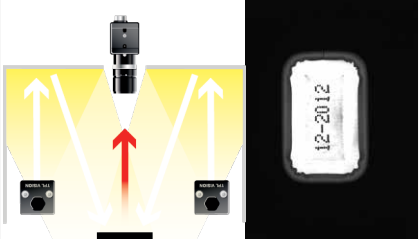
DIRECT INCLINED LIGHTING



DARKFIELD LIGHTING



DOME LIGHTING



RELATED PRODUCTS

Ask for your add-ons, customized for the Lite LBAR :

- wiring
- diffusers
- fixing hardware
- safety glasses

MY CONTACT

.....

.....

.....

.....

.....

TECHNICAL SPECIFICATIONS

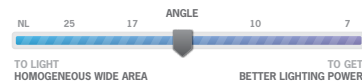
	4	8	12	16	20
Electronics					
Power supply	24 VDC +/-10%				
Functioning mode	Continuous				
Wiring	M12 4 poles male connector				
Max. Consumption	11	22	35	50	60
Optics					
Colour	White, Red, Green, Blue, Infrared				
Number of Leds	4	8	12	16	20
Lens by default	± 10°				
Mechanics					
Total length (mm)	312	596	880	1164	1448
Width x thickness	47 x 47 mm				
Useful length (mm)	284	568	852	1136	1420
Useful width (mm)	39				
Weight (g)	554	814	1467	1802	1923
Body materials	Colourless anodized aluminum				
Diffuser	Transparent diffuser				
Fixing	2 M8 nuts to insert in the groove located on the back of the lighting				
Included add-ons	2 M8 nuts				
Environment					
Operating temperature	0 - 40°C				
Storage temperature	0 - 60°C				
IP protection	IP 40				
Labels	RoHS-CE-DEEE				

HOW TO BUILD ONE'S REFERENCE

LBAR	REQUIRED SETTINGS			OPTION
	NUMBER OF LEDS	COLOUR	LENS/OPTIC ANGLE	DIFFUSER OPTION
	4	WHI	10 ± 10°	TRANSPARENT
	8	630	9-16 ± 9°/16°	DO OPAQUE
	12	525	17 ± 17°	DS SATIN
	16	470	25 ± 25°	POL POLARIZER
	20	850	NL NO LENS	

EXAMPLES :
 LBAR 4 WHITE LEDS ± 10° OPAQUE DIFFUSER : LBAR4-WHI-10-DO
 LBAR 12 RED LEDS ± 25° TRANSPARENT DIFFUSER : LBAR12-630-25
 LBAR 20 BLUE LEDS ± 9°/16° POLARIZER : LBAR20-470-9-16-POL

INFORMATION ABOUT LENSES
 NARROW ANGLE = GIVE PRIORITY TO LIGHTING POWER
 WIDE ANGLE = GIVE PRIORITY TO HOMOGENEITY AND WIDE AREA



Features and presentations liable to modifications without prior notice. C-1 version, 2014/02 Edition

TPL VISION – 20 rue de Saint Philbert – 44118 LA CHEVROLIÈRE
 Tél. + 33 2 40 56 10 99 – Fax. + 33 2 40 56 42 89
 www.tpl-vision.net



Other available documents :

- PDF, DWG, DXF, IGS, STEP & X_Y DRAWINGS
- USER'S GUIDE

