

## BACKLIGHT BLBAR

HOMOGENEOUS & POWERFUL LED LIGHTING BAR

▷ MACHINE VISION SYSTEM

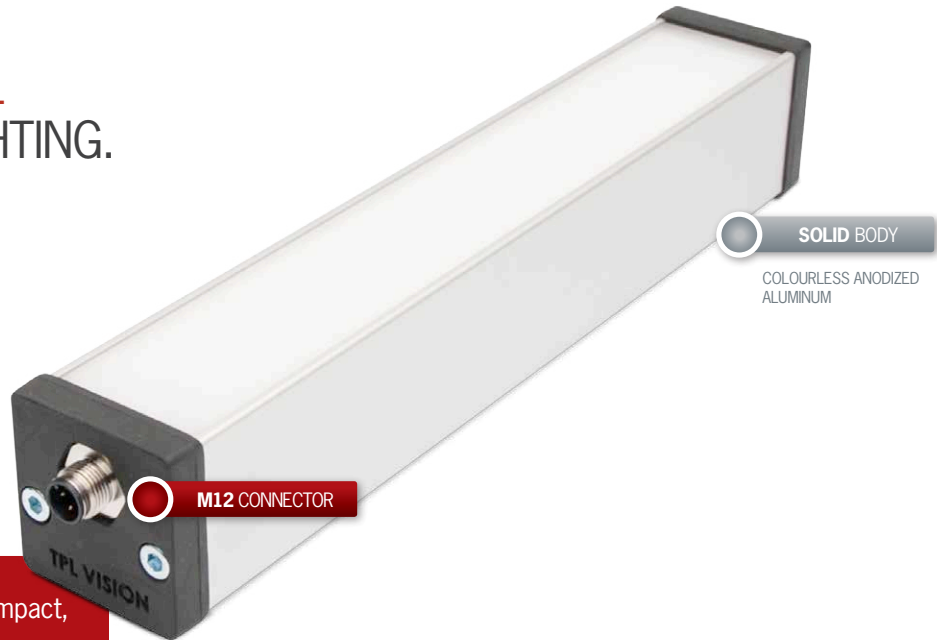
▷ QUALITY CONTROL WITH CAMERA

▷ HIGH POWERFUL LED

▷ BACKLIGHT METHOD

▷ DIFFUSE AND HOMOGENEOUS

FOR A POWERFUL  
& DIFFUSING LIGHTING.



**SOLID BODY**  
COLOURLESS ANODIZED  
ALUMINUM

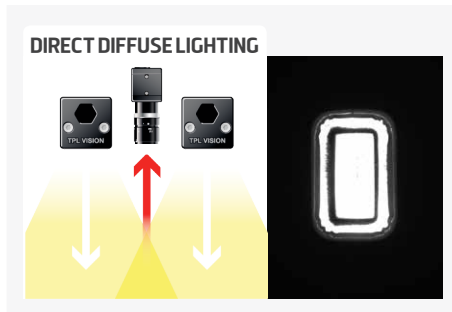
- ✓ No led lighting's points of impact,
- ✓ continuous or strobe mode,
- ✓ from 15 cm to 1 m 30.

The Backlight BLBAR provides a powerful and homogenous lighting, so as to get a perfect diffusion, with no led lighting's points of impact. It's the best linear camera's partner and it's precisely dedicated to Web Inspection applications.

This linear backlight can be an alternative to fluorescent lighting. It offers a better average life, colours variety, stability and power. You can notably use it as a very diffusing direct lighting.

Finally, as for every TPL Vision bar, you will also appreciate its solid aluminum structure and its easy fixing.

	Surface lighting	
BLBAR5	50000 lux	121 x 39 mm
BLBAR10	50000 lux	246 x 39 mm
BLBAR15	50000 lux	371 x 39 mm
BLBAR20	50000 lux	496 x 39 mm
BLBAR25	50000 lux	621 x 39 mm
BLBAR30	50000 lux	746 x 39 mm
BLBAR35	50000 lux	871 x 39 mm
BLBAR40	50000 lux	996 x 39 mm
BLBAR45	50000 lux	1121 x 39 mm
BLBAR50	50000 lux	1246 x 39 mm
Minimum guaranteed values (white lighting measures)		



## TECHNICAL SPECIFICATIONS

	5	10	15	20	25	30	35	40	45	50
<b>Electronics</b>										
Power supply	24 VDC +/-10%									
Functioning mode	Continuous or strobe according to wiring									
Maximum rising time	1.5ms									
Maximum falling time	1ms									
Wiring	a M12 4 poles male connector									
Max. consumption (W)	7,5	15	22,5	30	37,5	45	52,5	60	67,5	75
<b>Optics</b>										
Colour	White, Red, Green, Blue, Infrared									
Number of Leds	5	10	15	20	25	30	35	40	45	50
<b>Mechanics</b>										
Total length (mm)	153	278	403	528	653	778	903	1028	1153	1278
Width x thickness	47 x 47 mm									
Useful length (mm)	121	246	371	496	621	746	871	996	1121	1246
Useful width (mm)	39									
Weight (g)	329	516	703	890	1077	1264	1451	1638	1825	2012
Body materials	Colourless anodized aluminum									
Diffuser	Opaque diffuser									
Fixing	2 M8 nuts to insert in the groove located on the back of the lighting									
Included add-ons	2 M8 nuts									
<b>Environment</b>										
Operating temperature	0 - 40°C									
Storage temperature	0 - 60°C									
IP protection	IP 40 (in option : IP65 and IP69K*)									
Labels	RoHS-CE-DEEE									

## RELATED PRODUCTS

Ask for your add-ons, customized for the Backlight BLBAR :

- wiring
- diffusers
- fixing hardware
- safety glasses

### \* IP69K OPTION



## HOW TO BUILD ONE'S REFERENCE

REQUIRED SETTINGS			OPTION
<b>BLBAR</b>	<b>NUMBER OF LEDS</b>	<b>COLOUR</b>	<b>IP OPTION</b>
	5	WHI <input type="checkbox"/>	IP40 RATED
	10	630 <input type="checkbox"/>	IP65 IP65 RATED
	15	525 <input type="checkbox"/>	IP69K* IP69K RATED
	20	470 <input type="checkbox"/>	
	25	850 <input type="checkbox"/>	
	30		
	35		
	40		
	45		
	50		
<b>EXAMPLES:</b>			<b>RESULTS:</b>
BLBAR 5 WHITE LEDS IP40 RATED:			→ BLBAR5-WHI
BLBAR 15 RED LEDS IP69K RATED:			→ BLBAR15-630-IP69K
BLBAR 30 BLUE LEDS IP65 RATED:			→ BLBAR30-470-IP65

Features and presentations liable to modifications without prior notice. B-1 version, 2014/03 Edition

**TPL VISION** – 20 rue de Saint Philbert – 44118 LA CHEVROLIÈRE  
Tél. + 33 2 40 56 10 99 – Fax. + 33 2 40 56 42 89  
[www.tpl-vision.net](http://www.tpl-vision.net)



**Other available documents :**

- PDF, DWG, DXF, IGS, STEP & X\_Y DRAWINGS
- USER'S GUIDE

**Backlight BLBAR**

