



**ADJUSTABLE
POWER LIGHT**

**SMALL
DIAMETER**

Ø 56 MM

**SYNCHRONISATION
BETWEEN LIGHT
AND CAMERA
INCLUDED**

TINY'Z

ROBOTICS

**Miniature Ring
Light**

12 power LEDs

Strong aluminium body

Diffuse light

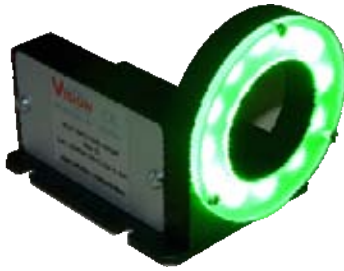
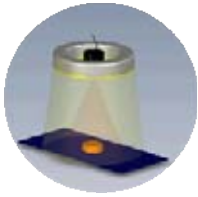
Adjustable power light
and switch on time

Synchronization between light
and camera included

**TPL
VISION**
Active LEDs solutions

www.tpl-vision.net

POWER LEDS MINIATURE RING LIGHT SET TINY'Z



Description :

Useful for directive and diffuse light of a circular area. This ring light is able to illuminate homogeneously a 1200mm diameter area located up to 2m away.

Mechanics have been especially designed for an easy set up and adjustment of your camera.

How to use it :

The camera is directly integrated with the Tiny'Z that provides a cooling effect. Minimum operative distance of 150mm to guarantee the homogeneity.

STROBE MODE ONLY.

Cameras : SONY XC-HR50 & 70, XC56, XC-HR57 & 58, Teli CS8600 series, Cognex Insight Micro (« C » version).

For the « -C » Version (Cognex set up):

The Tiny'Z forwards the Input/Output and trigger information which is generally sent by COGNEX M8 cable.

Products highlights :

Much more compact than the ANNU12, all the driving functions and synchronization are integrated.

Common applications :

Robotics : useful to locate the products during packaging.
Quality control : surface area faults, marking reading, presence/absence, lack of material, colours, etc.

Optional accessories :

M8 3 poles—5 M	C-M8-3P-5M
M12 8 poles cable — 5 m (for tinzy C)	C-M12-8P-5M
Polarizing filter for ring light Tiny'Z	POL-TINYZ
White diffuser for ring light Tiny'Z	DO-TINYZ
Transparent diffuser	DT-TINYZ

Order reference :

Miniature ring light set with integrated power supply for Insight micro	TINYZ-xxx (SONY & TELLI)
Miniature ring light set with integrated power supply	TINYZ-xxx-C

Order references in relation with the product :

Miniature ring light with external power supply	TINYZ-AD-xxx
---	--------------

	TINYZ-xxx	Comments
Electric specifications		
Power supply	24 VDC	+/- 10%
Power consumption	21.6 W	Max
Working mode	1 s limited by the system	
Strobe mode voltage	De 5 à 30 V	
Maximum power in the LED	175mA/350mA/500mA	
Strobe signal frequency	40 hz	
Maximum rise time	1700 µS	
Maximum fall time	500 µs	
Maximum duty cycle	20 %	
Wiring	M12 8 poles Male connector	
Mechanical specifications		
Number of LEDs	12	
Dimensions	74 x 69 x 96 mm	
Ring light diameters	Int. 38 mm Ext 66 mm	
Weight	300 g	
Material (body)	Black anodized aluminium	
Material (protector)	Matte diffuser	
Uniformity : covered surface area / Homogeneity	Ø200 mm at 150 mm	Ø1200 mm at 2 meters
Full optic angle	(DOM)90°	
Colours available	WHI WWHI 630 470 525	
Mounting options	4 CHC M4 screw holes	
Included accessories	Camera put up : 4 M3x8 screws provided. Earth strap	
Environment		
Operating temperature	0-40°C	
Storage temperature	0-60°C	
IP class	IP40	
Labels	RoHS - CE -DEEE	

Other documents available online :

- Product plans (pdf, dwg, dxf, igs, step and x_t)
- Plug in and settle up documents