



**6 COLOURS**  
**AVAILABLE**  
**IR & UV INCLUDED**

**VERY**  
**POWERFUL**  
**DIFFUSE LIGHT**



## **S-COA**

**CONFINED ENVIRONMENT**

Extra Powerful  
Coaxial Light

Power LEDs

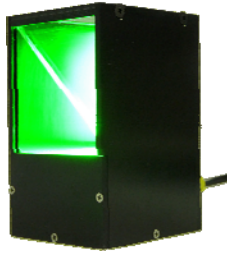
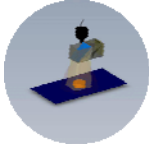
Operating area 50x50 mm

Anodised Aluminium body

**TPL**  
**VISION**  
Active LEDs solutions

[www.tpl-vision.net](http://www.tpl-vision.net)

## POWER LEDS COAXIAL LIGHT 50x50 mm



### Description :

S-COA55 produces a powerful reflected and diffuse light.

Useful to emphasize flat levels on a product.

Also used to contrast the surface area faults and the surface on its own.

### How to use it :

Place the COAXIAL light above and close to the product. The camera will see the product through the reflection system of the coaxial light.

### Products highlights :

High Power version. Useful for demanding applications in terms of production rate.

Also available in UV405 for glue and paint detection.

### Common applications :




Quality control : surface area faults, marking reading, lack of material on shiny areas when power is needed

### Caution :

Respect the screws' dimensions for fixing.

Use the pane of glass on the camera side with caution.

### Optional accessories :

	M8 3 poles female cable - 2 m	C-M8-3P-2M
	M8 3 poles female cable - 5 m	C-M8-3P-5M
	M8 3 poles crooked female cable - 2 m	C-CA-M8-3P-2M
	M8 3 poles crooked female cable - 5 m	C-CA-M8-3P-5M
	Power supply strobe rail Din (I<1A)	STRTP1000-DIN
	2 channels Power supply rail din	SWRTPL1000-DIN
	Power supply Gardasoft (I>1A)	PP500

### Order reference :

Coaxial light 50x50 mm	S-COA55-xxx-SE
------------------------	----------------

### Order references in relation with the product :

Coaxial Light 50x50 mm UV 405 nm	S-COA55-405-SE
----------------------------------	----------------

S-COA55-xxx-SE	Comments
----------------	----------

Electric specifications		
<b>Caution SE product : must be powered using constant current regulator</b>		
Max continuous current	700 Ma	
Max strobed current	2.1 A	
Max on time strobed mode	500 ms	
Max duty cycle strobed mode	10 %	
Wiring	Male M8 3 poles connector	
Mechanical specifications		
Number of LEDs	12	
Dimensions	95 x 55 x 62.5 mm	
Illumination window	50 x 50 mm	
Weight	280 g	
Material (body)	Black anodized aluminium	
Colours available (nm)	WHI 630 470 525 850	
Mounting options	4 M4 screws	not provided
Included accessories	/	
Environment		
Operating temperature	0-40°C	
Storage temperature	0-60°C	
IP class	IP40	
Labels	RoHS - CE - DEEE	

### Other documents available online :

- Product plans (pdf, dwg, dxf, igs, step and x\_t)
- Plug in and settle up documents